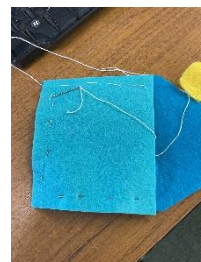




Year 2 News

21st November 2025



What we've been learning recently

English – We have started writing our own version of 'Lila and the Secret of the Rain' by changing the character and the secret of rain! In our stories we included expanded noun phrases, similes and conjunctions. We have been working hard on writing presentation and stamina.

Maths – We have been learning about subtraction and using different words that also mean subtract; like take away and minus. We started off subtracting two 2 digit numbers that don't cross a 10 e.g. 45-21. Then we started to learn how to exchange when a number sentence crosses the 10 e.g. 34-28. We need to exchange a 10 for 10 ones to work it out practically.

Wider Curriculum – In DT, we have been busy sewing in textiles! We have learnt how to thread and knot thread on a sewing needle and sew a running stitch. We pinned templates to cut felt into our pouch pieces, then we sewed them together. Using scraps of felt we cut and stuck smaller shapes to decorate it.

Over the next fortnight we will be...

- Exploring materials in science.
- Editing our stories.
- Learning how to do column addition and subtraction.
- Learning our Nativity songs and lines!

Important Notices

Nativity – Our KS1 Nativity; A Bundle of Joy is on Wednesday 17th December. Please see the email about getting tickets.

School Lunch – Please check your child is happy with their school lunch choice each day as we are sadly unable to change it when they get to the hall if they do not like it.

Library – We visit our school library each Friday. Please ensure your child brings their book back each week to change.

Contact details of the Year 2 team

2B - Sarah Jayne Hill
SJHill@wadebridgeprimary.co.uk

2W – Amelia Stephens & Ellie Bone
astephens@wadebridgeprimary.co.uk
ebone@wadebridgeprimary.co.uk

Shining Stars

Congratulations to our Shining Stars from the last two weeks for demonstrating our school values.

2B – Eva, Alana, Cole, Bailey

2W – Phoebe, Zara, Joshua, Jessica